

The clinical symptoms were SAH in 15 patients,<sup>7,9,12,14,17,20,22,24</sup> ischemia in 15,<sup>8,10,11,15,17–19,24</sup> and aneurysmal mass effect in six.<sup>16,17,23,24</sup> Treatment included surgical or endovascular intervention, anticoagulation or antiplatelet agent administration, and conservative management. Surgery should be considered if the dissecting aneurysm continues to cause intramural hemorrhage or increases in size.<sup>9,14,23</sup> However, such interventions often cause neurological deficits, whereas dissecting aneurysm of the PCA is relatively benign compared with other aneurysms in the posterior fossa.<sup>17</sup> The result of conservative treatment was not different from that of intervention among the 40 cases, so conservative treatment is recommended if neither rebleeding nor enlargement of the aneurysm is observed. Spontaneous resolution is sometimes observed,<sup>16</sup> so annual follow-up is recommended.

Dissecting aneurysm of the PCA is rare, but should be included in the differential diagnosis of young patients presenting with SAH.

## References

1. Jeng JS, Tang SC, Yip PK. Stroke in women of reproductive age: comparison between stroke related and unrelated to pregnancy. *J Neurol Sci* 2004;**221**:225–9.
2. Barrett JM, Van Hooydonk JE, Boehm FH. Pregnancy-related rupture of arterial aneurysms. *Obstet Gynecol Surv* 1982;**37**:557–66.
3. Kittner SJ, Stern BJ, Feaser BR, et al. Pregnancy and the risk of stroke. *N Engl J Med* 1996;**335**:768–74.
4. Selo-Ojeme DO, Marshman LA, Ikomi A, et al. Aneurysmal subarachnoid haemorrhage in pregnancy. *Eur J Obstet Gynecol Reprod Biol* 2004;**116**:131–43.
5. Ikeda K, Shoin K, Taguchi H, et al. Postpartum dissecting aneurysm of the superior cerebellar artery – case report. *Neurol Med Chir (Tokyo)* 1999;**39**:852–7.
6. Fisher CM, Ojemann RG, Roberson GH. Spontaneous dissection of cervico-cerebral arteries. *Can J Neurol Sci* 1978;**5**:9–19.
7. Ohkuma H, Nakano T, Manabe H, et al. Subarachnoid hemorrhage caused by a dissecting aneurysm of the internal carotid artery. *J Neurosurg* 2002;**97**:576–83.
8. Pozzati E, Andreoli A, Limoni P, et al. Dissecting aneurysms of the vertebrobasilar system: study of 16 cases. *Surg Neurol* 1994;**41**:119–24.
9. Berger MS, Wilson CB. Intracranial dissecting aneurysms of the posterior circulation. Report of six cases and review of the literature. *J Neurosurg* 1984;**61**:882–94.
10. Berthier E, Bourrat C. Dissecting aneurysm of the posterior cerebral artery: case report and review of the literature. *Cerebrovasc Dis* 1993;**3**:56–9.
11. Caplan LR, Estol CJ, Massaro AR. Dissection of the posterior cerebral arteries. *Arch Neurol* 2005;**62**:1138–43.
12. Ciceri EF, Klucznik RP, Grossman RG, et al. Aneurysms of the posterior cerebral artery: classification and endovascular treatment. *AJNR Am J Neuroradiol* 2001;**22**:27–34.
13. Cronqvist SE, Norrving B, Nilsson B. Young stroke patients. An angiographic study. *Acta Radiol Suppl* 1986;**369**:34–7.
14. Hamada J, Morioka M, Yano S, et al. Clinical features of aneurysms of the posterior cerebral artery: a 15-year experience with 21 cases. *Neurosurgery* 2005;**56**:662–70.
15. Kawahara I, Hiu T, Onizuka M, et al. Isolated posterior cerebral artery dissection – case report and review of the literature. *No Shinkei Geka* 2003;**31**:671–5.
16. Kondo A, Yasuhara T, Sugiu K, et al. Spontaneous thrombosis of a fusiform aneurysm arising from the distal posterior cerebral artery: case report. *No Shinkei Geka* 2003;**31**:189–93.
17. Lazinski D, Willinsky RA, TerBrugge K, et al. Dissecting aneurysms of the posterior cerebral artery: angioarchitecture and a review of the literature. *Neuroradiology* 2000;**42**:128–33.
18. Le Tu PT, Zuber M, Meder JF, et al. Isolated dissection of the posterior cerebral artery. *Rev Neurol (Paris)* 1996;**152**:542–7.
19. Maillo A, Diaz P, Morales F. Dissecting aneurysm of the posterior cerebral artery: spontaneous resolution. *Neurosurgery* 1991;**29**:291–4.
20. Ohki M, Nakajima M, Sato K, et al. A case of dissecting aneurysm associated with mixed connective tissue disease. *No To Shinkei* 1994;**46**:855–8.
21. Ono K, Inohara M, Shirotani T, et al. Posterior cerebral artery dissection. *Jpn J Neurosurg* 2001;**10**:710–7.
22. Pozzati E, Padovani R, Fabrizi A, et al. Benign arterial dissections of the posterior circulation. *J Neurosurg* 1991;**75**:69–72.
23. Sasaki O, Koizumi T, Ito Y, et al. Dissecting aneurysm of the posterior cerebral artery treated with proximal ligation. *Surg Neurol* 1992;**37**:394–401.
24. Xavier J, Vasconcelos C, Cruz R, et al. Endovascular treatment of dissecting aneurysms of the posterior cerebral artery. *Acta Med Port* 2001;**14**:65–70.
25. Stoodley MA, Macdonald RL, Weir BK. Pregnancy and intracranial aneurysms. *Neurosurg Clin N Am* 1998;**9**:549–56.
26. Depret-Mosser S, Monnier JC, Bouthors-Ducloy AS, et al. Cerebral aneurysms and pregnancy: 4 cases. *J Gynecol Obstet Biol Reprod (Paris)* 1992;**21**:947–54.
27. Van de Kelft E, Kunnen J, Truyen L, et al. Postpartum dissecting aneurysm of the basilar artery. *Stroke* 1992;**23**:114–6.

doi:10.1016/j.jocn.2006.04.005

# Migration of lumbar disc herniation: An unusual case

Ralph J. Mobbs<sup>a,\*</sup>, T.R. Steel<sup>b</sup>

<sup>a</sup> Prince of Wales Hospital, Peripheral Nerve Research Foundation, 3 Wansey Road, Randwick, Sydney, NSW 2031, Australia

<sup>b</sup> St. Vincents Hospital, Sydney, NSW, Australia

Received 11 January 2006; accepted 3 April 2006

\* Corresponding author. Tel.: +61 2 9650 4855; fax: +61 2 9650 4902.  
E-mail address: ralphmobbs@hotmail.com (R.J. Mobbs).

## Abstract

We illustrate a patient with a migrating lumbar disc fragment that caused a change in radicular symptoms from the L3 nerve root on one side to the L5 nerve root on the contralateral side, documented by magnetic resonance imaging (MRI). Our patient presented with 3 months of L3 pain on the right side with sensory and motor changes. Over a 24-hour time period, the right leg pain disappeared and he developed left leg pain attributable to left L5 nerve root compression. Investigation with MRI revealed an epidural mass, which was hypointense on T1-weighted and T2-weighted images that had migrated, initially compressing the right L3 nerve root, to now compress the left L5 nerve root. The patient did not wish to pursue surgery. Disc fragment migration patterns are discussed. We conclude that extruded disc fragments may migrate distant from their initial origin.

© 2006 Elsevier Ltd. All rights reserved.

**Keywords:** Migration; Lumbar disc; Herniation

## 1. Introduction

Lumbar disc disease is common, and symptomatic lumbar disc herniation has been recognised for over 70 years. Dandy (1929) was the first to recognise the clinical syndrome of radicular pain due to an extradural mass,<sup>1</sup> and Mixter and Barr<sup>2</sup> were the first to document that extruded disc material caused sciatic pain and detailed a surgical approach to the problem (1934). The most commonly recognised clinical syndrome is that of radiculopathy resulting from posterior or posterolateral disc rupture. Sequestered disc fragments account for 28.6% of all symptomatic disc herniations.<sup>3</sup> Herniated disc fragments are known to migrate within the spinal canal in many directions, including rostral, caudal and lateral,<sup>4,5</sup> and posterior epidural disc fragment migration has been reported rarely.<sup>6</sup> We report an unusual case of separate clinically symptomatic nerve root compression syndromes from the one disc fragment.

## 2. Case report

A 32-year-old man initially presented with three months of severe right-sided buttock and lateral thigh pain. He sought medical advice when he noticed that when walking down stairs, he lost power in the thigh and would nearly fall. Clinical examination revealed decreased sensation in the lateral aspect of the thigh, a reduced knee reflex on the right and weakness of hip flexion. He was unable to perform his usual activities as a restaurateur and was motivated to seek a rapid solution. An MRI scan was organised which revealed a significant disc herniation that caused impingement of the right L3 nerve root (Fig. 1A,B). After appropriate discussion the patient was booked for microdiscectomy following initial consultation. Two days prior to the date of surgery he was reviewed at the preadmission clinic. The patient reported an unusual history of events that had occurred over the previous few days. He stated that one evening during a ‘muscle spasm’ of his low back, he rotated and flexed his spine in sev-

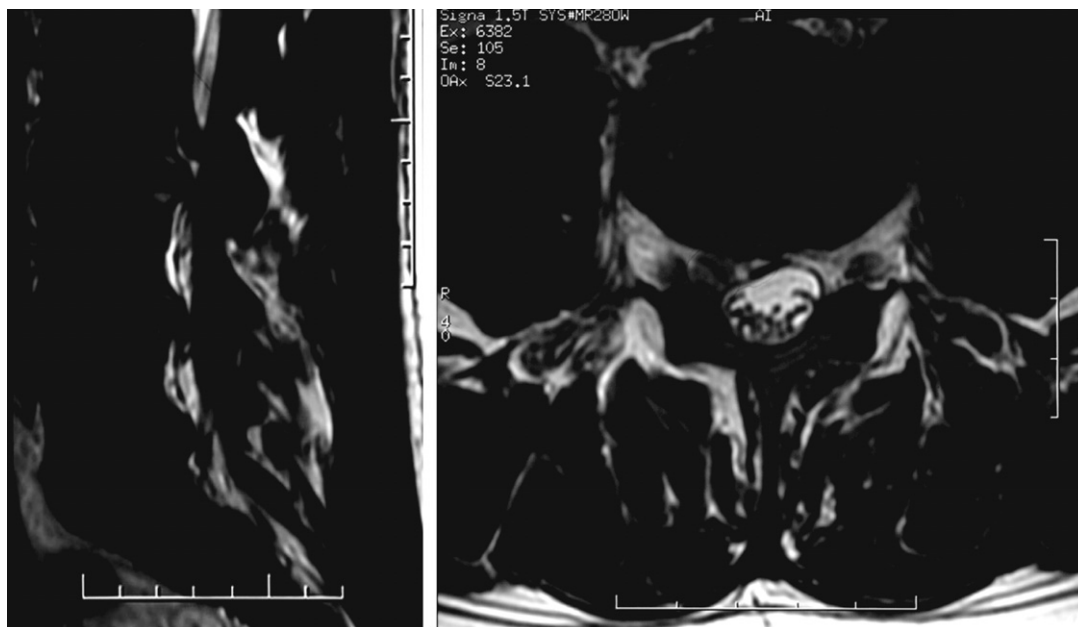


Fig. 1. (A) Sagittal T2 weighted MRI. A sequestered fragment is located anterior to the thecal sac at the level of the L3 vertebral body. (B) Axial T2 weighted MRI. Impingement of the thecal sac and right-sided nerve root by the disc fragment.

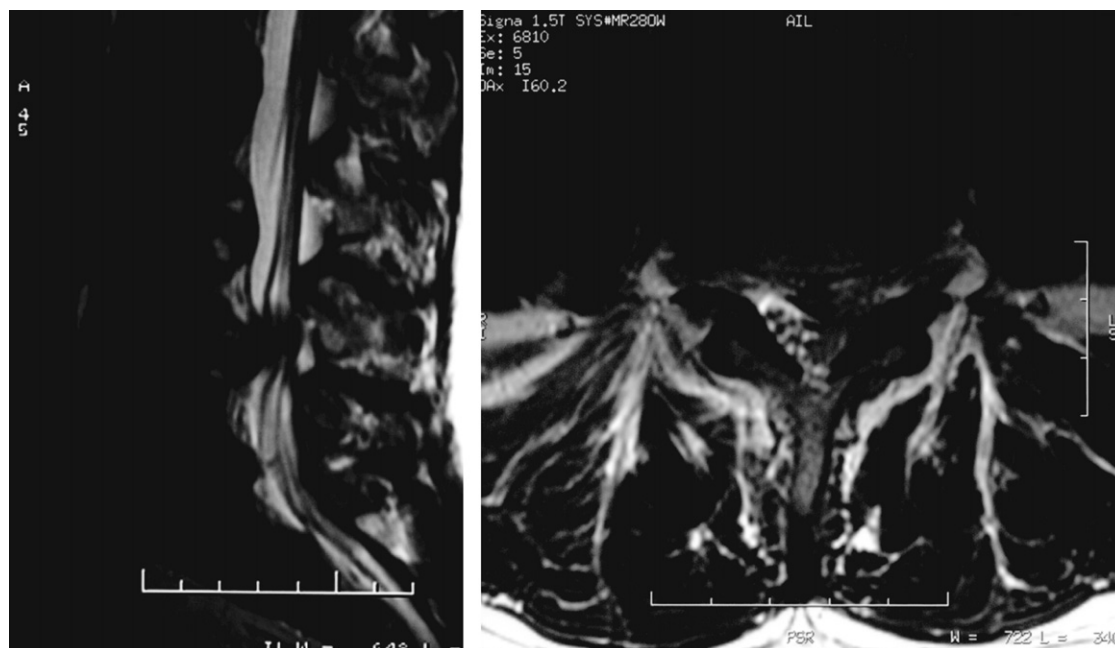


Fig. 2. (A) Sagittal T2 weighted MRI. The disc fragment at the level of L3 is no longer visible. There is now a fragment at the L4/5 level, as well as a contained broad-based disc bulge at this level, that has probably inhibited further migration of the fragment. (B) Axial T2 weighted MRI. Impingement of the thecal sac and nerve root by the disc fragment that is now located posterior to the thecal sac. The pre-existing L4/5 broad-based bulge has inhibited any further movement of the fragment in combination with the left-sided nerve roots.

eral directions in an attempt to relieve his pain. The following morning, much to his surprise, his right leg pain had disappeared. However, during the course of the day, he now noticed that he had left leg pain radiating into his knee and lateral aspect of his leg. On examination his right thigh sensory loss had recovered and knee reflexes were equal. There were no sensory or motor deficits in his left leg. He no longer stated that he had trouble walking down stairs and his leg would not 'give way'. The lumbar spine MRI was repeated. The disc fragment on the right side was no longer in position on the right at the L2/3 level. However, there was a new fragment on the left side at L4/5 (Fig. 2A,B). Comparison of the L2/3, 3/4 and 4/5 discs showed there was no new disc protrusion, rather the disc appeared to be the same disc fragment that had migrated to the contralateral side and migrated inferiorly to compress the left L5 nerve root. The initial MRI was re-examined by an independent neurosurgeon and radiologist to verify that there was no disc extrusion at the L4/5 level on initial presentation. The patient was no longer keen to proceed with microdiscectomy, as his new problem was not as disabling as his previous one.

### 3. Discussion

Disc herniation is defined as a localised displacement of disc material beyond the limits of the intervertebral disc space. The disc material may be nucleus, cartilage, fragmented apophyseal bone, annular tissue, or any combination thereof. A fragment of disc that has separated from the disc of origin and has no continuous bridge of disc tissue with the disc of origin is called a 'free fragment' or 'sequestered fragment' and the term 'migration' is used to signify displace-

ment of disc material away from the site of extrusion.<sup>7</sup> There are several methods for standardising the nomenclature used in reporting the location of disc lesions in the lumbar spine; however, the system most in use now is that presented by Whiltse et al.<sup>8</sup> In this system, areas in the axial plane (medial to lateral), are called 'zones', and in the craniocaudal direction, they are called 'levels'. The zones are the central canal zone, the subarticular zone, the foraminal zone, and the extraforaminal zone. In the caudocranial direction, the levels from above downward are the suprapedicle level, the pedicle level, the infrapedicle level and the disc level.

Disc fragment migration is frequent. When a fragment ruptures the posterior longitudinal ligament and enters the anterior extradural space as a distinct entity, it migrates in 35–72% of cases.<sup>9,10</sup> Subligamentous herniations (contained) and noncontained herniations, which rupture the posterior longitudinal ligament, can migrate away from the interspace. Lateral migration (for example, from the subarticular zone to the foraminal zone), at the level of the interspace is probably the most common pattern.<sup>11</sup> Rostral and caudal migration (for example, from disc level to pedicle level), together, are the most clinically important modes of migration, as they may result in retained fragments. Previous reports have noted a predominance of superior over inferior migration, whereas others have noted these motion patterns to occur with approximately equal frequency.<sup>12,13</sup> Ebeling found that the probability of upward migration was higher with far lateral discs, whereas more medial herniations tended to move caudally. Lombardi first described posterior extradural migration of a sequestered disc fragment in 1973.<sup>14</sup> Migration of disc material posterior to the dura is a very uncommon condition and has been reported

in only 21 cases.<sup>15,16</sup> Posterior epidural migration in the cervical spine has also been reported.<sup>17</sup> Various structures are hypothesised to prevent posterior migration of disc fragments,<sup>18,19</sup> and several authors attribute the rarity of these lesions to the presence of these anatomic barriers. These include the sagittal midline septum, peridural membrane, the nerve root, the dura, epidural vascular structures, and epidural fat.<sup>20</sup> The sagittal midline septum spans the space between the vertebral body and the posterior longitudinal ligament and appears to limit side-to-side migration. An additional more delicate connective tissue membrane limits posterolateral migration.<sup>21</sup> The peridural or lateral membrane, attaches to the free edge of the posterior longitudinal ligament medially and laterally to the wall of the spinal canal.<sup>22</sup> Once a fragment transgresses the peridural membrane, epidural fat and the epidural venous plexus, the nerve root itself presumably acts as an impediment to further posterior migration. The current case is the first report of migration to the contralateral side associated with an inferior migration over two levels. A defect in any one of these potential barriers may assist a fragment to migrate into the posterior extradural plane. Kuzeyli states there is a connection between posterior migration and the position of the nerve root relative to the intervertebral disc space following the observation of three cases.<sup>23</sup> In addition, they theorise that heavy labour, traction, spinal manipulation and conditions of hypermobility may also predispose to posterior migration of disc fragments. Of note, our patient states that he had an unusual episode of back spasm resulting in a rotatory/flexion movement prior to the change in his pain profile.

Magnetic resonance imaging is recommended in the evaluation of radiculopathy. The differential diagnosis of a posterior extradural lesion includes abscess, metastatic tumour and haematoma;<sup>24</sup> however, a sequestered disc fragment should be considered.<sup>25</sup> The patient has been advised that he can expect to have a good result following surgery as a recent study demonstrates that discectomy for a sequestered fragment appears to correlate with an excellent clinical outcome as compared with a contained, broad-based disc bulge.<sup>26</sup> Our patient is keen to proceed with conservative management. Disc reabsorption can occur and has been reported on multiple occasions.<sup>27,28</sup> Typically disc reabsorption occurs over months to years. In our patient it is unlikely that the L2/3 disc had reabsorbed due to the time-course of events. The authors consider that the unusual movements the patient underwent resulted in the migration of the disc fragment distant from its original position.

## References

1. Dandy WE. Loose cartilage from intervertebral disk simulating tumour of the spinal cord. *Arch Surg* 1929;**19**:660–3.
2. Mixer WJ, Barr JS. Rupture of the intervertebral disc with involvement of the spinal cord. *New Engl J Med* 1934;**211**:210–5.
3. Baker JK, Hanson GW. Cyst of the ligamentum flavum. *Spine* 1994;**19**:1092–4.
4. Ebeling U, Reulen HJ. Are there typical localisations of lumbar disc herniations? A prospective study. *Acta Neurochir (Wein)* 1992;**117**:143–8.
5. Manabe S, Tateishi A. Epidural migration of extruded cervical disk and its surgical treatment. *Spine* 1986;**11**:873–8.
6. Lichtor T. Posterior epidural migration of extruded lumbar disk. *Surg Neurol* 1989;**32**:311–2.
7. Fardon DF, Milette PC. Nomenclature and classification of lumbar disc pathology: Recommendations of the combined task forces of the North American Spine Society, American Society of Spine Radiology, and American Society of Neuroradiology. *Spine* 2001;**26**:93–113.
8. Wiltse LL, Berger PE, McCulloch JA. A system for reporting the size and location of lesions of the spine. *Spine* 1997;**22**:1534–7.
9. Gianni C, Scheithauer BW, Wenger DE, et al. Pigmented villonodular synovitis of the spine: a clinical, radiological and morphological study of 12 cases. *J Neurosurg* 1996;**84**:592–7.
10. Schellinger D, Manz HJ, Vidic B, et al. Disk fragment migration. *Radiology* 1990;**175**:831–6.
11. Williams AL, Haughton VM, Daniels DL, et al. Differential diagnosis of extruded nucleus pulposus. *Radiology* 1983;**148**:141–8.
12. Fries JW, Abodeedy DA, Vijungco JG, et al. Computed tomography of herniated and extruded nucleus pulposus. *J Comput Assist Tomogr* 1982;**6**:874–87.
13. Williams AL, Haughton VM, Daniels DL, et al. Differential diagnosis of extruded nucleus pulposus. *Radiology* 1983;**148**:141–8.
14. Lombardi V. Lumbar spinal block by posterior rotation of anulus fibrosus. Case report. *J Neurosurg* 1973;**39**:642–7.
15. Bonaroti EA, Welch WC. Posterior epidural migration of an extruded lumbar disc fragment causing cauda equina syndrome. Clinical and magnetic resonance imaging evaluation. *Spine* 1998;**23**:378–81.
16. Moore RJ, Vernon-Roberts B, Fraser RD, et al. The origin and fate of herniated lumbar intervertebral disc tissue. *Spine* 1996;**21**:2149–55.
17. Manabe S, Tateishi A. Epidural migration of extruded cervical disk and its surgical treatment. *Spine* 1986;**11**:873–8.
18. Schellinger D, Manz HJ, Vidic B, et al. Disk fragment migration. *Radiology* 1990;**175**:831–6.
19. Wiltse LL, Fonseca AS, Amster J, et al. Relationship of the dura, Hofmann's ligaments, Batson's plexus, and a fibrovascular membrane lying on the posterior surface of the vertebral bodies and attaching to the deep layer of the posterior longitudinal ligament: An anatomical, radiologic, and clinical study. *Spine* 1993;**18**:1030–43.
20. Bullough PG. Pigmented villonodular synovitis and synovial cysts of the spine. *Am J Neuroradiol* 1992;**13**:167–8.
21. Fick R. Posterior longitudinal ligament. In: Fick R, editor. *Handbuch der anatomie und mechanik der gelenke*, Vol. 2. Jena: G. Fischer; 1904. p. 80–2.
22. Domisse GF. Morphological aspects of the lumbar spine and lumbosacral region. *Orthop Clin North Am* 1975;**6**:163–75.
23. Kuzeyli K, Cakir E, Dsul H, et al. Posterior epidural migration of lumbar disc fragments: report of three cases. *Spine* 2003;**28**:E647.
24. Neugroschl C, Kehrli P, Gigaud M, et al. Posterior extradural migration of extruded thoracic and lumbar disc fragments: role of MRI. *Neuroradiology* 1999;**41**:630–5.
25. Masaryk TJ, Ross JS, Modic MT, et al. High-resolution MR imaging of sequestered lumbar intervertebral disks. *Am J Roentgenol* 1988;**150**:1155–62.
26. Carragee EJ, Han MY, Suen PW, et al. Clinical outcomes after lumbar discectomy for sciatica: the effects of fragment type and anular competence. *J Bone Joint Surg Am* 2003;**85-A**:102–8.
27. Delauche-Cavallier MC, Budet C, Laredo JD, et al. Lumbar disc herniation. Computed tomography scan changes after conservative treatment of nerve root compression. *Spine* 1992;**17**:927–33.
28. Maigne JY, Rime B, Deligne B. Computed tomographic follow-up study of forty-eight cases of non operatively treated lumbar intervertebral disc herniation. *Spine* 1992;**17**:1071–4.